

Optometry Board of Australia Registrant Data

Reporting period: 1 April 2017 – 30 June 2017

Table of contents

Introduction	3
Principal Place of Practice	4
Registration Type	4
Endorsements	5
Age Group.....	6
Registration Type	6
Gender	8
Registration Type	8
Percentage	8

Introduction

The role of the Optometry Board of Australia (the Board) include:

- registering optometrists and students
- developing standards, codes and guidelines for the optometry profession
- handling notifications, complaints, investigations and disciplinary hearings
- overseeing the assessment of overseas trained practitioners who wish to practise in Australia, and
- approving accreditation standards and accredited courses of study.

The Board's functions are supported by the [Australian Health Practitioner Regulation Agency](#) (AHPRA). For information about legislation governing our operations see [About AHPRA](#) at www.ahpra.gov.au/About-AHPRA/What-We-Do/Legislation.aspx.

The Board has analysed its registration data and produced a number of statistical breakdowns about registrants to share with the profession and community. The Board shares these breakdowns regularly.

For more information on optometry registration, please see the Board's website: www.optometryboard.gov.au/Registration.aspx

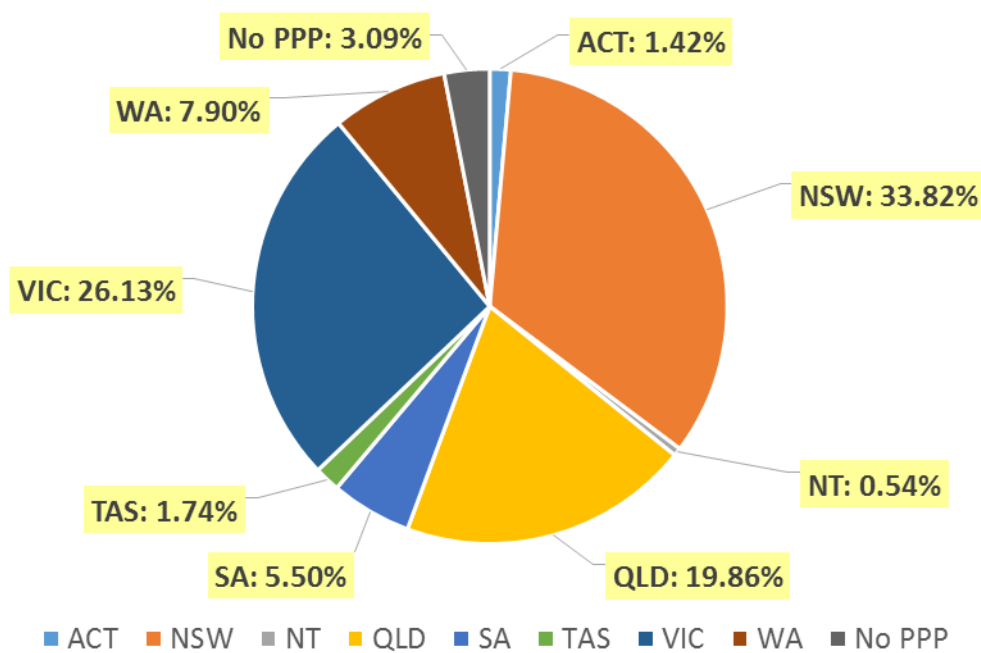
Principal Place of Practice

Registration Type

Table 1.1 Registration type by principal place of practice

Registration Type	Registration Sub-type	ACT	NSW	NT	QLD	SA	TAS	VIC	WA	No PPP	Total
General		74	1,764	29	1,040	292	92	1,359	415	102	5,167
Limited	Postgraduate training or supervised practice				1				1		2
	Teaching or research		2								2
Non-practising		2	41		20	2	1	37	6	63	172
Total		76	1,807	29	1,061	294	93	1,396	422	165	5,343

Table 1.2 Registration type by principal place of practice percentages



Endorsements

Table 2.1 Endorsements

Endorsement	ACT	NSW	NT	QLD	SA	TAS	VIC	WA	No PPP	Total
Scheduled Medicines*	38	707	21	522	182	68	952	202	25	2,717
% of general registrants who are endorsed	51.4%	40.1%	72.4%	50.2%	62.3%	73.9%	70.1%	48.7%	24.5%	52.6%

Table 2.2 Endorsements by age group

Age Group	Scheduled Medicines*	% of General Registrants
U - 25	296	99.3%
25 - 29	791	94.7%
30 - 34	446	65.0%
35 - 39	333	51.7%
40 - 44	248	42.5%
45 - 49	208	34.4%
50 - 54	137	29.0%
55 - 59	151	29.4%
60 - 64	70	20.1%
65 - 69	31	26.5%
70 - 74	5	10.6%
75 - 79	1	5.6%
80+		
Total	2,717	52.6%

**Only Optometrists holding general registration are eligible to hold the scheduled medicines endorsement.*

Age Group

Registration type

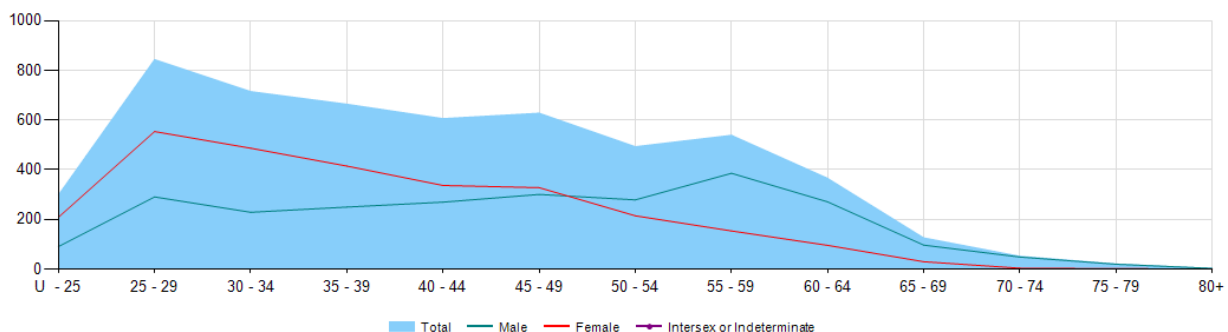
Table 3.1 Registrants by age group

Age Group	General	Limited		Non-practising	Total
		Postgraduate training or supervised practice	Teaching or research		
U - 25	298				298
25 - 29	835	1		7	843
30 - 34	686	1	2	25	714
35 - 39	644			19	663
40 - 44	583			22	605
45 - 49	604			23	627
50 - 54	473			19	492
55 - 59	513			25	538
60 - 64	348			17	365
65 - 69	117			8	125
70 - 74	47			4	51
75 - 79	18			2	20
80+	1			1	2
Total	5,167	2	2	172	5,343

Table 3.2 Registrants age group, by principal place of practice

Age Group	ACT	NSW	NT	QLD	SA	TAS	VIC	WA	No PPP	Total
U - 25	5	109	1	64	24	6	64	24	1	298
25 - 29	13	272	7	146	61	6	287	45	6	843
30 - 34	8	221	1	149	36	10	227	45	17	714
35 - 39	12	242	3	123	33	3	164	63	20	663
40 - 44	13	171	5	133	35	13	163	53	19	605
45 - 49	12	205	2	137	28	11	144	61	27	627
50 - 54	4	152		119	13	11	123	46	24	492
55 - 59	6	221	8	85	28	19	101	42	28	538
60 - 64	3	153		66	27	7	74	20	15	365
65 - 69		42	1	23	5	4	34	11	5	125
70 - 74		10	1	15	3	3	9	8	2	51
75 - 79		9		1	1		5	3	1	20
80+							1	1		2
Total	76	1,807	29	1,061	294	93	1,396	422	165	5,343

Table 3.3 Registrants by age group



Gender

Registration Type

Table 4.1 Gender by state and territory by registration type

Gender	Registration Type	Sub Type	ACT	NSW	NT	QLD	SA	TAS	VIC	WA	No PPP	Total
Female	General		40	974	14	535	142	36	739	190	50	2,720
	Limited	Postgraduate training or supervised practice				1				1		2
		Teaching or Research		1								1
	Non-practising		1	22		9	2		23	5	34	96
Total Female			41	997	14	545	144	36	762	196	84	2,819
Male	General		34	790	15	505	150	56	620	225	52	2,447
	Limited	Teaching or research		1								1
	Non-practising		1	19		11		1	14	1	29	76
Total Male			35	810	15	516	150	57	634	226	81	2,524
Total			76	1,807	29	1,061	294	93	1,396	422	165	5,343

Percentage

Table 4.2 Registrants by gender percentages

Gender	ACT	NSW	NT	QLD	SA	TAS	VIC	WA	No PPP	Total
Female	53.9%	55.2%	48.3%	51.4%	49.0%	38.7%	54.6%	46.4%	50.9%	52.8%
Male	46.1%	44.8%	51.7%	48.6%	51.0%	61.3%	45.4%	53.6%	49.1%	47.2%